



Tools of the trade...

Climate Analysis Winter School

TOOLS

- **"A device used to perform or facilitate work,"** or "something regarded as necessary to the carrying out of one's occupation or profession,"
- an entity used to interface between two or more domains that facilitates more effective action of one domain upon the other.

multiple

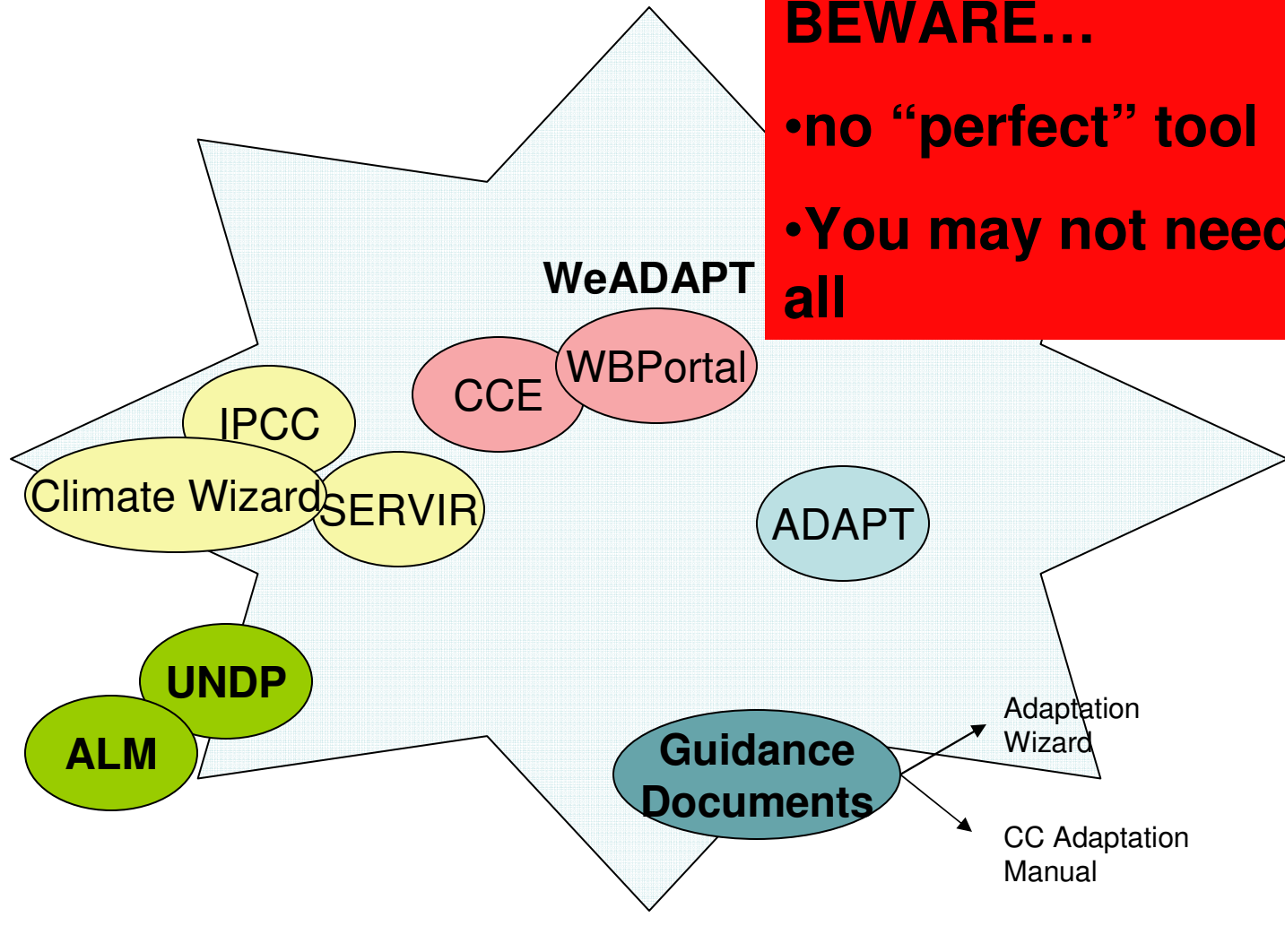
- Interfaces
- Entry points
- Analytical features
- Flexibility
- Available data....

Variable flexibility in...

BEWARE...

- no “perfect” tool
- You may not need it all

DATA



INTERACTION

Adaptation Learning Mechanism

Country: Swaziland

National Communication (NC)

Key Vulnerabilities

- Agriculture/Food Security
- Water Resources
- Terrestrial Ecosystems

Potential Adaptation Measures

[Link to NC](#)

NC publication year: May 21, 2002

Adaptation Initiatives

 **Submit**

Many initiative summaries were provided by the World Resources Institute. See [Weathering the Storm](#).

Socio-economics of Impacts and Adaptation

Supporting Scientific Data

Historic Climate-Related Disaster Risk

For summary information, explanations and citations, move the cursor over underlined text.

Flood	 High
Cyclones	 Low
Drought	 High

Projected Climate Change

For summary information, explanations and citations, move the cursor over underlined text.

Temperature


	Dec-Feb	Jun-Aug
2020s	+0.75 - +1.25 °C	+0.7 - +1.6 °C
2050s	+1 - +3.25 °C	+1 - +4 °C

Precipitation


	Dec-Feb	Jun-Aug
--	---------	---------

UNDP Climate Profiles

School of Geography and the Environment Search Go



SCHOOL OF GEOGRAPHY AND THE ENVIRONMENT



[Home](#) | [News](#) | [Research](#) | [Staff](#) | [Undergraduate Honour School](#) | [International Graduate School](#) | [Intranet](#) | [Contact Us](#)


Location: [Home](#) / [Research](#) / [Climate Systems and Policy](#) / [UNDP Climate Change Country Profiles](#) [site map](#) | [search](#)

Contents

- [Country Index](#)
- [How to use the UNDP Climate Change Country Profiles](#)
- [Further Information](#)

Go to

- [Climate Systems and Policy research cluster](#)

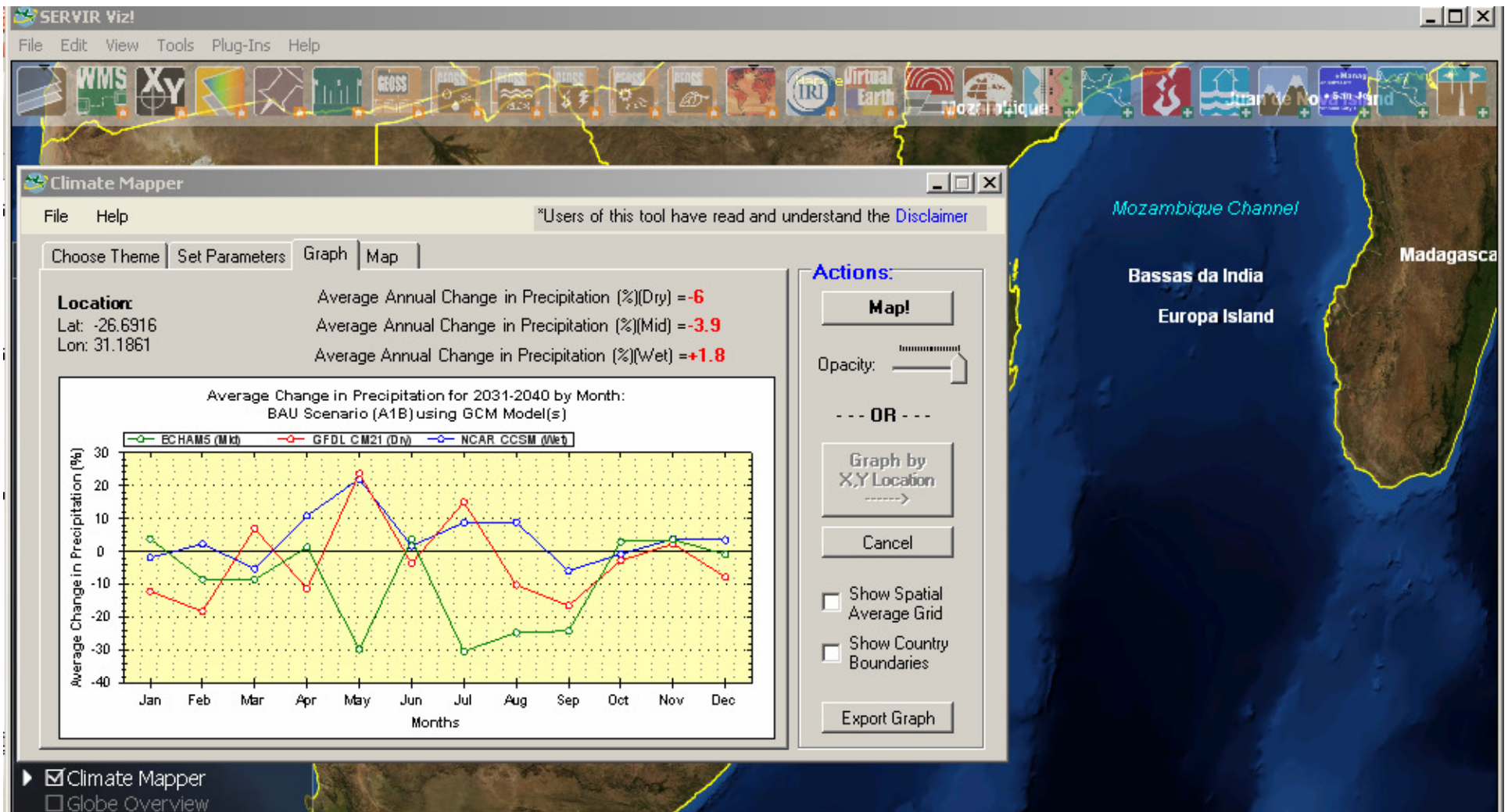


Research: [Climate Systems and Policy](#)

UNDP Climate Change Country Profiles

These country-level climate data summaries were prepared with funding from the UNDP National Communication Support Programme (NSCP) and the UK government Department for International Development (DfID) in order to address the climate change information gap for developing countries by making use of existing climate data to

USAID SERVIR



<http://www.servir.net/index.php?lang=en>

Climate Wizard



ClimateWizard



[About Us](#)

[FAQ's](#)

[Contact Us](#)

Analysis Area	Time Period	Map Options	Measurement	Downloads
<input type="radio"/> United States <input checked="" type="radio"/> Global <input type="text" value="Swaziland"/>	<input type="radio"/> Past 50 Years <input checked="" type="radio"/> Mid Century (2050)	<input type="radio"/> Map of Average <input checked="" type="radio"/> Map of Change <input type="text" value="Annual"/>	<input checked="" type="radio"/> Average Temperature <input type="radio"/> Precipitation	Map Image Data (GIS format) Documentation Printer Friendly Version
Future Climate Model <i>IPCC Fourth Assessment</i> Emission Scenario <input type="text" value="High A2"/> General Circulation Model <input type="text" value="UKMO-HadCM3"/>	Change in Average Annual Temperature by 2100 Model: UKMO-HadCM3, SRES emission scenario: A2			
				Map Transparency <input type="text" value="0"/>

IPCC Data Distribution Center

Climate observations and model data can be viewed using the DDC Unified Visualisation application.

A visualisation selection can be saved as a black & white or colour image in a choice of output formats.

Zoom in and pan across the dynamic map.

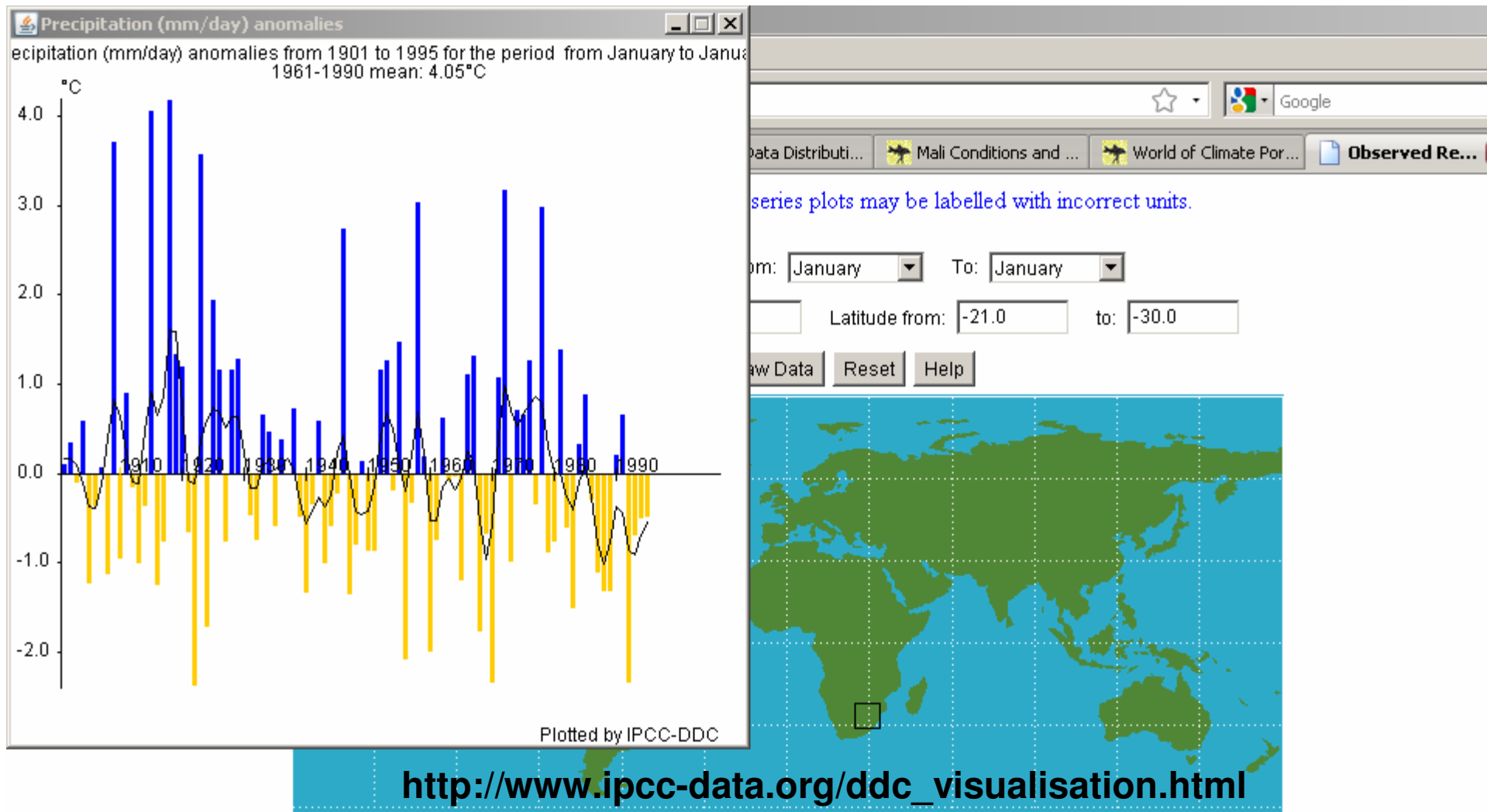
Choose a dataset and field to view.

Select date and time

Dataset	Field	Selection Notes
IPCC-DDC CRU observation climatologies	Cloud Cover	IPCC-DDC CRU observation climatologies
10 year climatology	Diurnal Temperature Range	10 year climatology
30 year climatology	Ground-frost Frequency	
	Maximum Temperature	
	Mean Temperature	
	Minimum Temperature	
	Precipitation	

http://www.ipcc-data.org/ddc_visualisation.html

IPCC Data Distribution Center



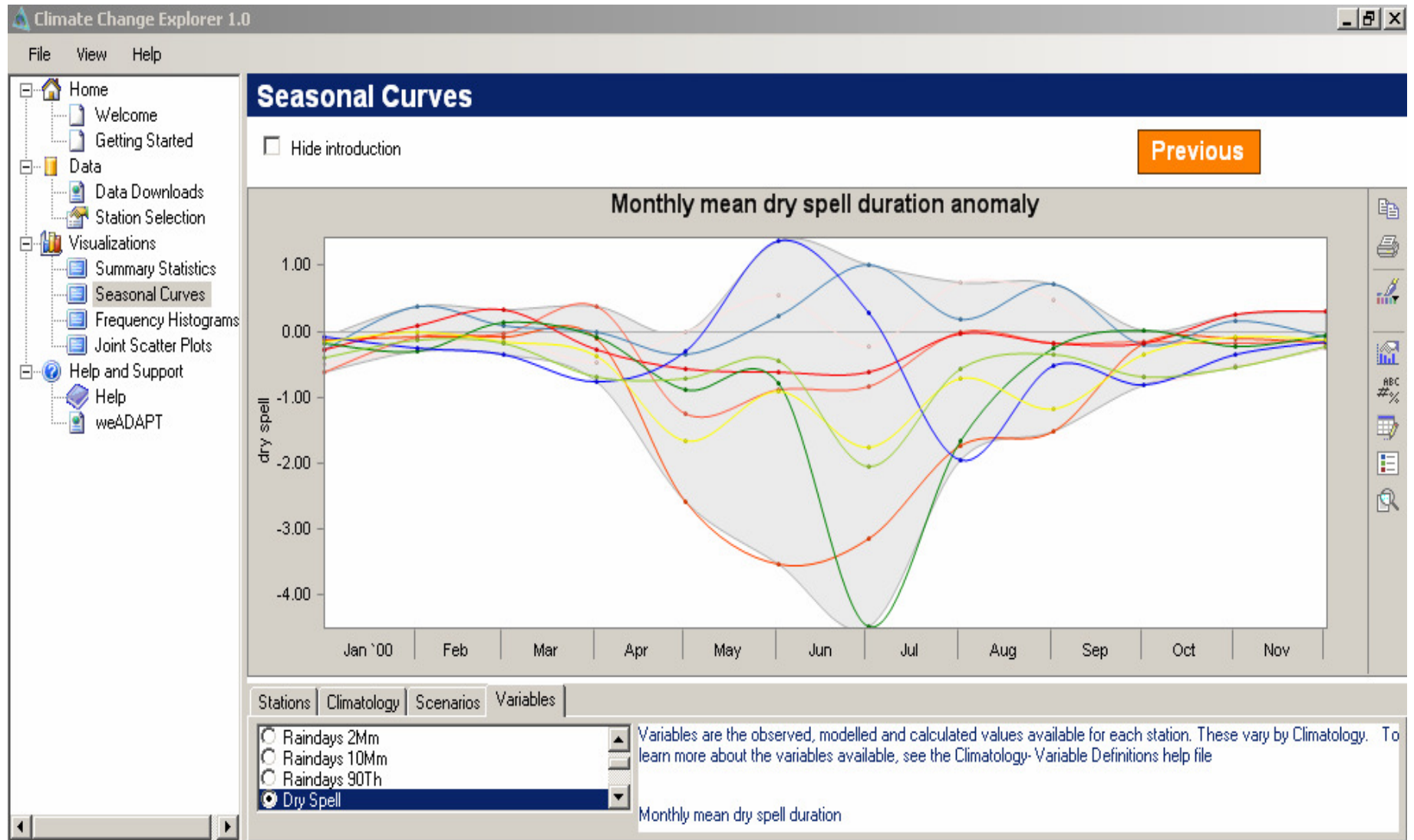
WB Portal

The screenshot displays the WB Portal interface. On the left is a dark green sidebar with navigation links: GIS Map, World Bank Project Data Base, World Bank Document Data Base, Knowledge Database, Tools, and Other external databases. Below these are links for Disclaimer and FEEDBACK, and a copyright notice for 2009 Climate Change Team Environment Department.

The main area features a satellite map of Southern Africa and Madagascar. A green star on the map indicates the location of Swaziland. Below the map, a light blue information bar shows: Country: Swaziland, Port, Latitude / Longitude: -26.51/31.46, Holdridge Zone: Subtropical dry forest, and coordinates Latitude -24.49 and Longitude 21.36. A small copyright notice for 2009 TerraMetrics, NASA, and other providers is also present.

At the bottom, a horizontal menu contains several buttons: Climate Data, Adaptation Screening Tool, Historical Data, Natural Disaster Data, Socioeconomic Indicators, Agricultural Data, and a prominent green button labeled Download Data & Resources for selected country.

Climate Change Explorer



weADAPT

weADAPT | Home - Mozilla Firefox

File Edit View History Bookmarks Tools Help

http://weadapt.org/

Climate Wizard The Climate Change Explor... Climate Change Data Portal Observed Regional Time Se... weADAPT | Home

HOME

People & Institutions

- Partners
- Individuals
- Who's who

Tools & Data

- Methods
- Climate Data
- Climate Change Explorer
- Adaptation Decision Explorer
- Google Earth Adaptation Layer

Guidance & Experience

- wikiADAPT
- Briefing notes
- Videos

weADAPT
Collaborating on
Climate Adaptation

WHAT weADAPT IS.
weADAPT is a collaboration between leading organisations on climate adaptation and includes new and innovative tools and methods, datasets, experience and guidance.

QUICKLINKS - WELCOME BACK!
EXPLORE THE NEWLY RELEASED weADAPT ADAPTATION LAYER IN GOOGLE EARTH. Find the location and type of adaptation projects from around the world. Learn from the experiences of others. Add your projects and experiences

www.wikiadapt.org

[article](#) [discussion](#) [view source](#) [history](#)

* navigation

- * [LOG IN](#)
- * [REQUEST ACCESS](#)
- * [Main Page](#)
- * [Guides to wikiADAPT](#)
- * [Recent changes](#)
- * [Page Categories](#)

* introduction

- * [What is weADAPT?](#)
- * [Why use a Wiki?](#)
- * [Your Questions](#)
- * [wikiADAPT tutorial](#)
- * [FTP for big files](#)
- * [FAQ](#)
- * [Editing Templates](#)
- * [Help](#)

Mali Conditions and Trends- an assessment of vulnerability and climate change

Mali Conditions and Trends- an assessment of vulnerability and climate change



Contents [hide]

- 1 [Project Information](#)
- 2 [Conditions and Trends](#)
- 3 [Study Sites](#)
- 4 [Identify Climate Vulnerability Exposure](#)
- 5 [Assessing Conditions and Trends](#)
- 6 [Identifying Hazards](#)
- 7 [Analyzing the Impacts of Climate Change](#)
- 8 [Understanding Trends](#)
- 9 [Links](#)
- 10 [Related Pages](#)

Project Information

Under the Netherlands Climate Assistance Programme (NCAP) [🔗](#)

ADAPT

The screenshot shows a web browser window with several tabs open: 'UNDP Climate Chan...', 'Adaptation Learning...', 'Climate Wizard', 'UK Climate Impacts ...', 'Climate Chan...' (active), 'Mali Conditions and ...', and 'IPCC-DDC: Data Vis...'. The main content area features a dark brown header with the text 'Climate Change Data Portal' and 'For Development Practitioners and Policy Makers'. Below this is a navigation bar with 'Home', 'Users guide', 'Climate Change Website', and 'About'. The 'Users guide' section is highlighted in green and contains the text: 'ADAPT provides a simple and quick way of assessing development projects for potential sensitivities to climate change. The tool brings together climate data-bases and Expert assessment of the threats and opportunities arising from climate variability and change. Essentially, the tool mimics an initial consultation with a climate change Expert. The tool is intended for project team members, both within the Bank and within client countries, who are not aware...'. To the right, the 'Summary of the Climate in your Region' section includes a 'Climate Map' link and a heading 'Climate Survey for Your Region (Swaziland)'. Below this heading is a list of five bullet points: 'No significant change in mean annual rainfall (-15 to +15%) is projected for your site.', 'No significant change (-10 to + 10) in consecutive dry days is projected for your site', 'A moderate increase in temperature (1 - 2.5° C) is projected for your site.', 'A moderate decrease in runoff (>35%) is estimated for your site. This areas are quite prone to desertification, so strict water management and sustainable land uses are important issues to be considered.', and 'No significant change (± 25 mm) in the maximum 5-day precipitation (rainfall extreme events) is projected for your site.'

Climate Change Data Portal

For Development Practitioners and Policy Makers

Home

Users guide

Climate Change Website

About

What is it?

ADAPT provides a simple and quick way of assessing development projects for potential sensitivities to climate change. The tool brings together climate data-bases and Expert assessment of the threats and opportunities arising from climate variability and change.

Essentially, the tool mimics an initial consultation with a climate change Expert. The tool is intended for project team members, both within the Bank and within client countries, who are not aware...

Summary of the Climate in your Region

[Climate Map](#)

Climate Survey for Your Region (Swaziland)

- ▶ No significant change in mean annual rainfall (-15 to +15%) is projected for your site.
- ▶ No significant change (-10 to + 10) in consecutive dry days is projected for your site
- ▶ A moderate increase in temperature (1 - 2.5° C) is projected for your site.
- ▶ A moderate decrease in runoff (>35%) is estimated for your site. This areas are quite prone to desertification, so strict water management and sustainable land uses are important issues to be considered.
- ▶ No significant change (± 25 mm) in the maximum 5-day precipitation (rainfall extreme events) is projected for your site.

...have a look at...

Tool	Source	Web or Install
IPCC	http://www.ipcc-data.org/ddc_visualisation.html	Web
Climate Change Explorer Tool	http://wikiadapt.org/index.php?title=The_Climate_Change_Explorer_Tool	Install - http://www.wikiadapt.org/filestore/wikiadapt/CCE_Set_Up.zip
UNDP climate change profiles	http://country-profiles.geog.ox.ac.uk/	Web
Wikiadapt	http://www.wikiadapt.org	web
Weadapt	http://www.weadapt.org	web

...have a look at...

Tool	Source	Web or Install
World Bank Climate Portal	http://sdwebx.worldbank.org/climateportal/	Web
Climate Wizard	http://www.climatewizard.org/	Web
Servir Climate Mapper	http://www.servir.net/index.php?lang=en	Install
Adaptation Learning Mechanism	http://www.adaptationlearning.net/profiles	Web
Adaptation Wizard	http://www.ukcip.org.uk/index.php?option=com_content&task=view&id=49&Itemid=200	Web

Think about

- 8 questions
 - Learning Curve
 - Usability
 - Relevance
 - Help and Support (interpretation)
 - Most interesting
 - Most frustrating
 - If not you, then who?
 - What would you change/add/delete?